



# Tools and Accessories



## TurnPro™ Tools

Indexing Handle Tube Bender

Tube Cutter

Benchtop Coiled Tube Straightener

Ratchet Wrenches

Liquid Leak Detector

Hydraulic and Manual Preswaging Tools

[www.mySSP.com](http://www.mySSP.com)





At SSP, we are proud to be an American manufacturing success story.

**100% of our products are made in America.** All of our manufacturing is performed in our 165,000 sq. ft. facility located near Cleveland, Ohio. Our facility is the largest vertically integrated, single-site operation in the industry. In addition to manufacturing and assembly, we have closed die forging, tool & die design, product engineering and testing operations under the same roof with customer service and management.

**Made in America is good business.** Not only do we make everything in America, we use American suppliers too. Buying American allows us to have better quality control and a more reliable supply chain. We can work more closely within our walls and with our suppliers to improve quality, reduce costs, and shorten lead times, which means faster service and better products for you.

**Support where it counts.** SSP products and services are supported by more than 4000 people and 350 distributor locations around the globe. For a distributor near you, contact SSP Customer Service or visit [www.mySSP.com/distributors](http://www.mySSP.com/distributors).

**SSP** *Industry Standard Products*  
*Made Better*

# TRUE TO YOUR WORK

**Hardworking, pro-grade hand tools that are engineered and built for the way you work.**

We know that working with high-quality tools is the first step to achieving superb results. With TurnPro tools you'll get the job done right the first time.

## **YOU CAN COUNT ON OUR LIFETIME WARRANTY**

All TurnPro tools are backed by the SSP Lifetime Warranty – more importantly, they're backed with a with a commitment to your success as an installer through in person and online training.

## **QUESTIONS ANSWERED**

Each TurnPro™ hand tool comes with support from the SSP family of distributors.

For product how-to information or a free demonstration, contact an SSP Customer Service Representative at +1.330.425.4250.

# OUR FORMULA FOR A LEAK-FREE CONNECTION



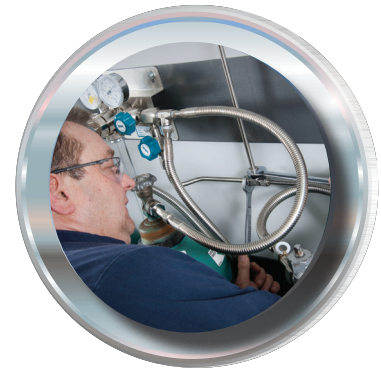
## **SPECIFICATION CONTROLLED TUBING**

- Highest quality from dual certified 316/316L American made tubing
- Better assembly reliability through restricted tolerance control of hardness and outer diameter
- Contaminant-free and fully protected with end-caps
- Safety ensured by MAWP printed on each tube



## **PRECISION MACHINED FITTINGS**

- Confidence from manufacturer's Lifetime Warranty
- Contaminant-free installation with individually bagged fitting
- Positive identification of proper sizing from tube end marking
- Reduced installer fatigue and improved consistency through lowest assembly torque in industry
- Superior corrosion resistance through EXPANITE® component hardening



## **PROPERLY TRAINED INSTALLER**

- Training classes – facilitator and participant guides, CD, online
- QR codes on installation cards inside packaging
- TurnPro innovative tools

# TurnPro™ Indexing Handle Tube Bender

TurnPro Indexing Handle Tube Benders perform bends up to 180° in a single operation. A patented quick-release trigger allows users to reposition handles as they come together, eliminating crossed handles and making bends greater than 90° faster and easier.

### Benefits

- Bend greater than 90° in a single operation
- No scoring of tubing

### Features

- Eliminate crossed handles
- Comfortable grip
- Rollers in handle reduce friction and bending effort
- Suitable for stainless steel, alloys and other hardened tubing
- Suitable for high-cycle tube bending
- No disassembly and reassembly of bender handles
- Quick-release trigger allows quick indexing of the handle



Part #	Description
TP-HTB-4	1/4" Bender
TP-HTB-6	3/8" Bender
TP-HTB-8	1/2" Bender
TP-HTB-6M	6MM Bender
TP-HTB-8M	8MM Bender
TP-HTB-10M	10MM Bender
TP-HTB-12M	12MM Bender



# SSP Training

## *The Right Way*

### TurnPro™ Tube Bending

#### Training

SSP and our distributors offer hands-on training for selecting, planning, laying out, bending and installing tubing systems.

Our TurnPro Tube Bending Training is a hands-on program designed for technicians and production personnel. It's a great program for anyone who needs to learn the correct way to plan, layout and bend tubing.

#### *Learn how to properly:*

- Select and handle tubing
- Prepare tubing for bending and installation
- Measure and layout tube bending projects
- Make bends up to 90°
- Use the indexing handle to make bends greater 90°
- Make left- and right-reference bends
- Make on-plane and multi-plane bends
- Layout and Install tubing runs for safety and easy maintenance

For more information on training, please contact an SSP Customer Service Representative at +1.330.425.4250.



## *Working Smart*

### TurnPro™ Selection and Installation Training

SSP and our distributors offer Selection and Installation Training for a variety of fittings.

#### *Upon completion of this training, participants will be able to properly:*

- Identify and select a variety of tube and pipe fittings
- Select and prepare tubing
- Install tube and pipe fittings
- Remake fittings when applicable
- Gauge, test and troubleshoot fitting applications
- Use preswaging tools to make tube fitting installation safer and easier
- Use liquid lead detector to find leaks

For more information on training, please contact an SSP Customer Service Representative at +1.330.425.4250.



# Tube Cutter

The TurnPro Tube Cutter is a durable, compact tool that delivers fast, smooth cutting, of stainless steel, nickel alloy, titanium and other hard metal from 1/4 to 1-3/8in (6mm to 35mm)

### Features

- Rugged body for stability and durability
- Contoured frame for easy alignment
- 6 Unique anti-spiral bearing rollers
- Ergonomic Knob
- Long-lasting hardened cutting wheel for stainless steel and hard alloys
- Spare Cutting wheel included

### Benefits

- Smooth, precise, spiral-free tube cutting
- Compact swing radius
- Trouble-free, high-cycle operation
- Easy maintenance



Part #	Description
TP-TC-316	Tube cutter for stainless steel, Hard Alloys, soft copper, and aluminum 1/4 to 1-3/8in (6mm to 35mm)
TP-TCW-316	Tube cutter replacement cutting wheel 2 Pack

# TurnPro™ Reaming & Deburring Tool

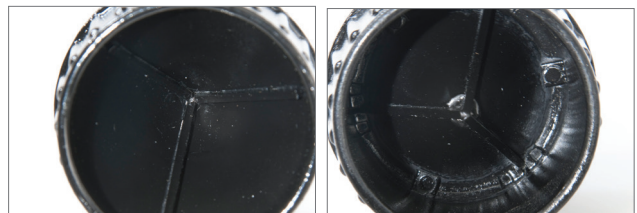
Deburring is necessary to ensure proper tube fitting installation. The TurnPro Inner-Outer Reaming and Deburring Tool provides a fast tube end preparation prior to tube fitting installation.

### Benefits

- Ream and deburr inside and outside of tube ends
- Durable body
- Comfortable grip
- Clockwise and counterclockwise operation

### Features

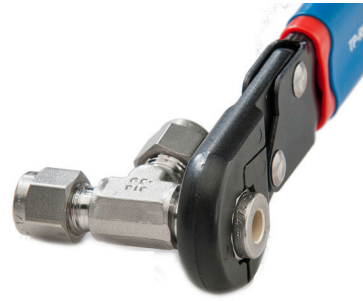
- Three hollow-ground cutters
- Tough die-cast body
- Tungsten-hardened steel blades



Part #	Description
TP-TDT-24	Tube deburring tool, 3/16" to 1-1/2" and 4mm to 38mm OD

# TurnPro™ Ratchet Wrenches

TurnPro Ratchet Wrenches speed installation of tube fittings and valves, hex nuts, bolts and other fasteners. The open-jaw design and 30° ratchet action make it easy to grip and tighten fittings and fasteners, even in tight spaces.



## Benefits

- Heavy-duty construction for long service life
- No warping or distorting of fittings or fasteners
- Ratchet indexes in 1/12-turn increments, making working in restricted spaces easier

## Features

- Hardened steel jaws
- Heavy gauge alloy steel handles
- Open-jaw design
- 12-point contact distributes torque pressures evenly

Part #	Description	Part #	Description
TP-RW-04	1/4" Tube Fitting Wrench, 9/16" Hex	TP-RW-M3	3MM Tube Fitting Wrench, 12MM Hex
TP-RW-05	5/16" Tube Fitting Wrench, 5/8" Hex	TP-RW-M6	6MM Tube Fitting Wrench, 14MM Hex
TP-RW-06	3/8" Tube Fitting Wrench, 11/16" Hex	TP-RW-M8	8MM Tube Fitting Wrench, 16MM Hex
TP-RW-08	1/2" Tube Fitting Wrench, 7/8" Hex	TP-RW-M10	10MM Tube Fitting Wrench, 22MM Hex
TP-RW-10	5/8" Tube Fitting Wrench, 1" Hex		
TP-RW-12	3/4" Tube Fitting Wrench, 1-1/8" Hex		

# TurnPro™ Preswaging Tool for Instrumentation Tube Fittings

TurnPro Preswaging Tools allow in-field swaging of tube fitting ferrules to tube prior to assembly in the tube fitting. Preswaging is used in challenging installations where tube fittings are difficult-to-reach or in confined spaces.



## Features

- Compact size fits in a toolbox
- Durable solid steel body with vise flats
- Hardened steel insert for accurate swaging over one hundred of installations
- Attached cap protects threads from damage

Part #	Description	Part #	Description
TP-MPT-2	Manual pre-swage tool 1/8"	TP-MPT-M6	Manual pre-swage tool 6mm
TP-MPT-4	Manual pre-swage tool 1/4"	TP-MPT-M8	Manual pre-swage tool 8mm
TP-MPT-6	Manual pre-swage tool 3/8"	TP-MPT-M10	Manual pre-swage tool 10mm
TP-MPT-8	Manual pre-swage tool 1/2"	TP-MPT-M12	Manual pre-swage tool 12mm
TP-MPT-12	Manual pre-swage tool 3/4"		
TP-MPT-16	Manual pre-swage tool 1"		

# Tube Fitter's Bag

The SSP Tube Fitter's Bag has all the tools needed to bend, cut, fit, and gage tubing systems up to 1/2 in.

### Features

- 21 High Quality TurnPro® tools and accessories
- Limited Lifetime Warranty
- Bag made from ballistic material for maximum durability
- 14 pockets to organize tools
- Internal divider adjusts to keep tools secure and organized
- Padded shoulder strap



**Tube Fitter's Bag Contents - Part# TP-TFB-1**

1/4 in. tube bender, 9/16 in. radius	9/16 in. hex ratchet wrench	PTFE Tape 1/4 in.	1/2 in. manual presetting tool
3/8 in. tube bender, 15/16 in radius	5/8 in. hex ratchet wrench	PTFE Tape 1/2 in.	1/4 in depth marking tool
1/2 in. tube bender, 1 1/2 in. radius	11/16 in hex ratchet wrench	Nickel Impregnated PTFE Tape 1/2 in.	3/8 in depth marking tool
SSP Tube Bender's Guide	13/16 in. hex ratchet wrench	1/8 in. manual presetting tool	1/2 in depth marking tool
1/8 to 1 1/8 in. SS tube cutter	SSP Tube Fitter's Guide	1/4 in. manual presetting tool	Reaming and Deburring Tool
Tube cutter w/ 5 replacement wheels	Gap Gage 1/4 to 1/2 in, 6 to 12mm	3/8 in. manual presetting tool	24 in. Tool Bag

# Hydraulic Swaging Tool

Hydraulic swaging is the recommended method for installing 1 in. and larger SSP tube fittings. The standard Hydraulic Swaging Tool swages 1 in. through 2 in. tube-fitting ferrules onto the tubing prior to assembly with the fitting body reducing the time and effort required to make up large tube fittings. Tooling for 3/4 in. tube fittings is available.

### Features

- Fast setup
- Easy-to-use
- Quick and easy tooling changes
- Installed fittings are 100% gaugeable
- Unique marking feature indicates that swaging is complete
- Detachable base for swaging in place
- Rugged rolling carrying case

### Weight

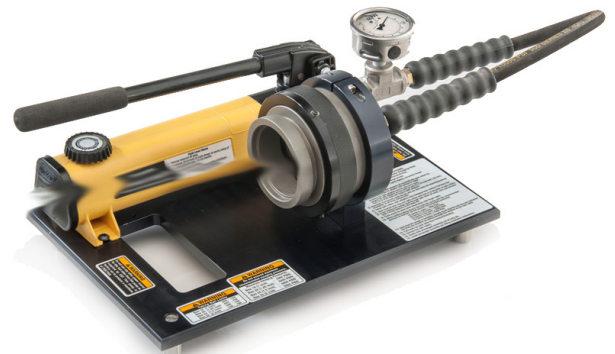
HST with base: 25lbs.

Case: 12H x 32W x 20D

Case and HST With All Tooling: 77lbs.

### Part#

TP-ITSD1632HST





# Liquid Leak Detector

The TurnPro Liquid Leak Detector is used by assembly, installation, and maintenance people in a wide range of industries to ensure quality, reduce environment and safety risks, and to improve the performance of gas systems.

## Features

- Unique formula detects even very small leaks
- Standard- and low-temperature formulas
- Flexible extended application tube allow testing in hard to reach places
- Nontoxic
- Noncorrosive
- Nonflammable
- Dries clean

## Temperature Ranges

Product	Temperature Range
TurnPro Liquid Leak Detector	32 to 200°F (0 to 93°C)
TurnPro Low Temperature Liquid Leak Detector	-65 to 200° F (-33 to 93° F)



Part #	Description
TP-LLD-80Z-12	8 oz. bottles TurnPro Liquid Leak Detector - Sold 12 per case
TP-LLDLT-80Z-12	8 oz. bottles TurnPro Low-Temperature Liquid Leak Detector - Sold 12 per case
TP-LLD-1GA-4	1 gal. bottles of TurnPro Liquid Leak Detector - Sold 4 per case
TP-LLDLT-1GA-4	1 gal. bottles of TurnPro Low-Temperature Liquid Leak Detector- Sold 4 per case

# TurnPro™ Benchtop Tube Straightener

## Improving Efficiency and Reducing Waste

Using coiled tubing allows installers to run continuous lines of seamless tubing without fittings or welding. The tube straightener allows installers to straighten exactly what they need, reducing waste and connections.



## Features

- Straightens 1/4, 3/8 and 1/2 in. heavy walled tubing
- Reduces waste and saves time - straighten exactly what they need.
- Fast! Set up and pull tubing in minutes
- One person can pull even heavy walled 1/2 in. tubing
- Lightweight (42 lbs.) straightener
- Change sizes in minutes
- Mounts on a bench top, trailer hitch or any flat surface
- Durable carrying case contains everything necessary to straighten tubing.

## Bill of Materials - Part# TP-TSL-468

Component	Quantity
Straightener Base	1
Roller Dies: 1/4, 3/8 and 1/2 in.	5 ea.
1/8 in. (optional)	5
Die Holders	2
Roller Bolts & Washers	5 ea.
Calibration Rods: 1/4, 3/8 and 1/2 in.	1 ea.
Tailgate Mount	1
Table Clamps	2
Pelican Carrying Case	1

# Accessories

## PTFE Tape

PTFE tape enhances sealing and reduces the potential for galling or seizing.

- Standard PTFE and nickel-impregnated PTFE tape are available
- Nickel impregnated tape provides higher protection against galling.
- Temperatures up to 450° F (232° C)



PART #	DESCRIPTION
TP-PTFET-4	PTFE Thread Sealant tape. 1/4 by 520 in. rolls
TP-PTFET-8	PTFE Thread Sealant tape. 1/2 by 520 in. rolls
TP-V-NCT-8	Nickel Impregnated PTFE Thread Sealant tape. 1/2 by 520 in. rolls

## Installation Accuracy Tools – Gap Gage

TurnPro Gap Gages allow installers and inspectors to verify proper tightening of a tube fitting prior to pressurizing a system. Gap gauges:

- Reduce installation, commissioning, and maintenance costs
- Improve installation quality and productivity
- Enhance system reliability, safety, and performance.



PART #	DESCRIPTION
TP-GG-468M10	Gap Gauge 1/4, 3/8 and 1/2 in. (6, 10, and 12mm)
TP-GG-12	Gap Gauge 3/4 in. (18mm)
TP-GG-16	Gap Gauge 1 in. (25mm)

## Installation Accuracy Tools – Depth Marking Tools

TurnPro Depth Marking Tools help ensure that tubing is inserted properly in the tube fitting body. They help control installation quality, especially in hard-to-reach or confined-space installations where it might be difficult to determine if the tube is completely inserted into the fitting.



PART #	DESCRIPTION
TP-DMT-4	1/4 in. Depth Marking Tool
TP-DMT-6	3/8 in. Depth Marking Tool
TP-DMT-8	1/2 in. Depth Marking Tool
TP-DMT-M6	6mm Depth Marking Tool
TP-DMT-M10	10mm Depth Marking Tool
TP-DMT-M12	12mm Depth Marking Tool

### Lifetime Limited Warranty

Any hand tool product supplied by SSP that fails to render service due to defect in workmanship or materials will be replaced or repaired at no charge. Product failures due to misuse, abuse, normal wear and tear or alterations are not covered by the Lifetime Warranty. Wear items (such as cutter wheels) will need to be replaced over time and are not included. SSP makes no other warranty, expressed or implied. Tools should be returned to the buyer's place of purchase.

# More SSP Products



## Tube Fittings

*Duolok and Griplok two-ferrule and Unilok® single ferrule tube fittings provide leak-tight installation even when intermixed with Swagelok®, Hoke Gyrolok® and Parker CPI™ fittings.*



## Valves

*The FloLok valve offering includes ball, check, metering, needle, toggle, plug, bleed, and purge valves for pressures up to 10,000 psig.*



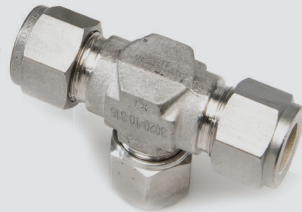
## Tubing

*SSP offers straight and coiled seamless 316 stainless steel instrumentation tubing for instrumentation, process and utility applications.*



## Pipe Fittings

*TruFit and TruFit 10K pipe fittings are available in a wide range of weld, threaded and flared connections.*



## Filters

*FloLok in-line and tee-type filters trap particles to clean sample fluids and protect sensitive process and analytical instrumentation components and equipment.*



## Hose

*TruFit PTFE-lined and flexible metal core hose assemblies are used in a variety of instrumentation, utility, biopharm and other applications.*



## Tools & Accessories

*SSP TurnPro professional hand tools, power tools and installation training make quality tube system installation faster and easier.*



## Quick Connects

*SSP offers single-end shutoff, double-end shutoff, and full-flow quick connects for instrumentation and process applications.*

# SSP

Founded 1926

Privately owned, third generation business

Modern single-site vertically integrated manufacturing facility

DFARS-compliant raw material

ISO 9001 quality management system

Lifetime Limited Warranty



8250 Boyle Parkway • Twinsburg, OH 44087  
330-425-4250 • [www.mySSP.com](http://www.mySSP.com)