

# Duolok® Tube Fittings

Duolok® two-ferrule tube fittings provide leak-tight installation when intermixed with Swagelok® and Parker® A-LOK™ fittings, provided they are used in accordance with SSP Fittings' published installation and service recommendations.

To provide a reliable, leak-proof connection in instrumentation and process tubing systems, Duolok tube fittings consist of four precision-machined components: **① Body**, **② Front Ferrule**, **③ Back Ferrule**, and **④ Nut**.

## Lifetime Warranty

Duolok tube fittings are covered by a lifetime limited warranty. Visit [www.mySSP.com](http://www.mySSP.com) for details.



8250 Boyle Parkway  
Twinsburg, OH 44087 U.S.A.  
P: 1.330.425.4250

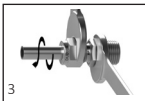
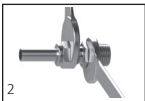
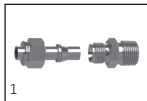


[www.mySSP.com](http://www.mySSP.com)

# Duolok® Tube Fittings

## INSTALLATION INSTRUCTIONS

1. Remove the tube fitting from protective bag.
2. Fully insert the tube into the Duolok tube fitting body, then hand tighten the Duolok nut. See Figure 1, below.
3. While holding the fitting body stable with a back-up wrench, scribe the nut for a reference point and wrench-tighten 1 and 1/4 turn for sizes 1/4" - 1" (Metric 6mm - 25mm) and 3/4 of a turn for sizes 1/16" - 3/16" (Metric 3mm - 5mm) See figures 2 & 3.



**IMPORTANT!** SSP recommends 3/4 in. and larger tube fittings be preswaged using a hydraulic swaging tool.