

## Ordering Instructions

### Ordering FB Series valves requires the following steps:

- 1 Locate the basic part number with the required orifice size and end connection type and size.  
*Example: 38PD8-316* Note: Duolok Tube Fitting end connections are standard. Unilok, and Griplik tube fitting end connections are also available.
- 2 Add designators from chart E for other options. *Example: 38PD8-316-RD-XP98*

NOTE: The Part Number and Dimensions Tables contain the most popular part numbers. Valves can be configured with different end connection types and sizes. Please use the special order table below to construct a part number for quote. *Example: 38PD86PF-316-RD-XP98*

(basic ordering number)

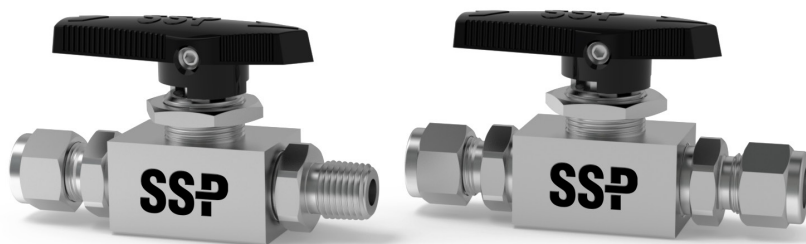


38P D8 6PF -316

(options)



-GR -LD -SG1



### A TEMPERATURE

Blank Standard (FB)  
L Low-Temperature (LFB)

### B VALVE SIZE/SEAT MATERIAL

36P 0.250 Ball Orifice - PEEK Seats  
36T 0.250 Ball Orifice - PTFE Seats  
38P 0.472 Ball Orifice - PEEK Seats  
38T 0.472 Ball Orifice - PTFE Seats

### C INLET TYPE<sup>2</sup> + OUTLET TYPE<sup>2</sup>

		Fractional Sizes:	Metric Sizes:
D	Duolok® Tube Fitting	4 1/4 in.	M6 6 mm
U	Unilok® Tube Fitting	6 3/8 in.	M8 8 mm
G	Griplik® Tube Fitting	8 1/2 in.	M10 10 mm
DM	Duolok® Metric	12 3/4 in.	M12 12 mm
PF	Female NPT	16 1 in.	M16 16 mm
PM	Male NPT		
FRT	Female ISO Tapered		
S	Male ORFS		
SS	Female ORFS		

### D BODY MATERIAL

-316 316 SS

#### Additional Valve Materials

Alloy 400/405 and Alloy C-276 materials are available for FB series valves. Contact SSP for more information

### E OPTIONS<sup>1</sup>

#### HANDLES

(Blank) Black  
-GR Green  
-RD Red  
-BL Blue  
-YW Yellow  
-OG Orange  
-NH No Handle

#### SPECIAL CLEANING

-XP98 Per ASTM G93 Level C and CGA G-4.1

#### OTHER OPTIONS

-LD Locking Hardware  
-SG\* Sour Gas  
\*See Sour Gas Options on page 8.  
-R110 ECE R110 Approved valve (L36P/L38P series only)

<sup>1</sup> Add options designators to the end of the Base Part Number in alphabetical order.

<sup>2</sup> Tube end connection part numbers are formatted "Type" followed by "Size." Example: D6.

Pipe end connections are formatted "Size" followed by "Type." Example: 6PF

If both ends of the valve are the same, then only designate the end connection one time. Example 38PD8-316. If they are different, use both designators together. Example: 38PD88PF-316.