

## Ordering Instructions

- 1 Select the basic ordering number from the Part Numbers and Dimensions table based on the end connections and orifice size for the valve. Example: **QC4-D-D4-316**
- 2 Select the body or stem designator, then add it to the base part number. Example: **QC4-D-D4-316**
- 3 Select the inlet type and size designator, then add it the part number. Example: **QC4-D-D4-316**
- 4 Select the material designator, then add it the part number. Example: **QC4-D-D4-316**
- 5 Select the O-ring designator. Example: **QC4-D-D4-316-KZ**
- 6 Select the color key to prevent accidental intermixing of different lines. Example: **QC4-D-D4-316-KZ-K1**

### Stems

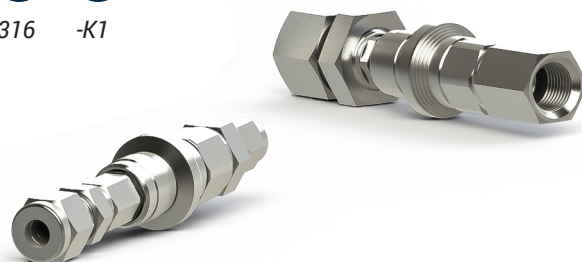
**A** **B** **C** **D** **E** **F**  
 QC4 -D -D4 -316

### Caps & Plugs

**A** **B** **D** **F**  
 QC4 -SP -316 -K1

### Bodies

**A** **B** **C** **D** **E** **F**  
 QC4 -B -D4 -316



**A** **STEM/BODY SIZE**  
 QC4 1/4 Orifice size  
 QC6 3/4 Orifice size  
 QC8 1/2 Orifice size

**D** **MATERIAL**  
 -316 316 SS

**E** **O-RINGS**  
 (Blank) fluorocarbon FKM  
 -KZ Kalrez® FFKM

**B** **CONNECTION TYPE**  
 B Bodies  
 D DESO (Double end shutoff)  
 S SESO (Single end shutoff)  
 BC Body Connector  
 SP Stem Plug

**F** **COLOR KEYS**  
 K1 Black  
 K2 Orange  
 K3 Green  
 K4 Yellow  
 K5 Blue  
 K6 White  
 K7 Purple  
 K8 Brown

**C** **INLET TYPE & SIZE**  
 D2 Duolok Tube Fitting 1/8 in.  
 D4 Duolok Tube Fitting 1/4 in.  
 D6 Duolok Tube Fitting 3/8 in.  
 D8 Duolok Tube Fitting 1/2 in.  
 2PF Female NPT 1/8 in.  
 4PF Female NPT 1/4 in.  
 6PF Female NPT 3/8 in.  
 8PF Female NPT 1/2 in.  
 2PM Male NPT 1/8 in.  
 4PM Male NPT 1/4 in.  
 6PM Male NPT 3/8 in.  
 8PM Male NPT 1/2 in.

Kalrez® is a registered trademark of DuPont Performance Elastomers.